

—产品特性/Feature—

- 200-240VAC (50/60Hz) 输入 / 200-240VAC (50/60Hz) Input
- 可以通过外加 DALI 主控实现平滑的调光效果。 / It can perform smooth dimming effect through connecting with a DALI main controller. ■ 单通道恒流输出： / Single channel constant current output;
- 遵循DALI协议标准 IEC62386； / Follow the DALI protocol of standard IEC62386
- 高效率、高功率因素，稳定性好 / High efficiency, high PF, good steady;
- 短路保护，过流保护 / Short circuit/over current protection;
- 100%满载老化测试 / 100% full load burn-in test;
- 独立外置，Class II 恒流类型 / independent, Class II constant current type;
- 防护等级 IP20 / degree of protection IP20;
- 适用于面板灯 / 天花灯 / 筒灯等照明应用 / suitable for LED lighting, ceiling light, down light and panel light;
- 3年质保期 / 3 years warranty.



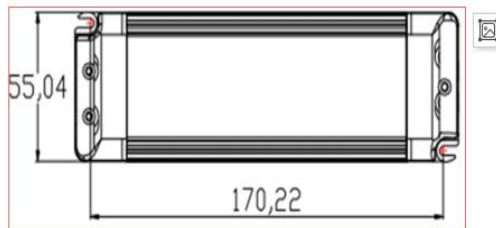
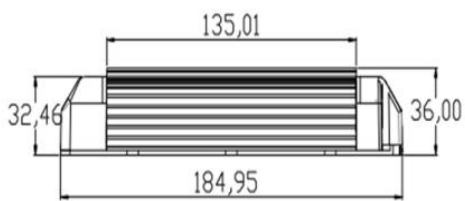
产品参数/Specification

Model	LKAD069D-D	
输入 Input	AC电压范围/AC Voltage range	200-240V
	频率/Frequency	50/60hz
	谐波/THD	
	功率因数/Power factor	0.95/230VAC
输出 Output	额定电压/Rated voltage	40V
	空载电压/No-load Voltage	45V
	DC电压范围/DC voltage range	20-40V
	DC电流范围/DC current range	1400mA
	电流精度/Current precision	(+/-) 3%
	额定功率/Rated power	60W
	开机延时/Setup Time	≤0.5s/230VAC
使用环境 Environment Requirements	工作温度/湿度要求 Operating Temp./RH	-30~+45°C/20~95%
	储存温度, 湿度要求 Storage Temp./RH	-40~+80°C/10~95%
安全和电磁兼容	认证编号/Certificate	
其他	尺寸/Size	185*55*32mm
	重量/Net weight	

测试数据/Test data

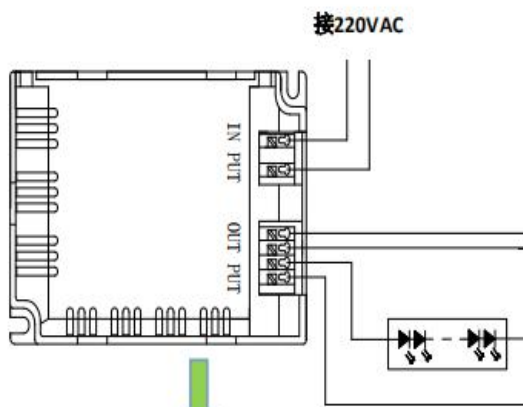
输入电压 Input voltage (Vac)	输入电流 Input current (mA)	输入功率 Input power (W)	功率因数 PF	输出电压 Output voltage (Vdc)	输出电流 Output current (mA)	输出功率 Output Power (W)	转换效率 Efficiency (%)	谐波系数 THD
200	171	32.91	0.960	20.00	1390	27.80	84.5%	
	242	47.57	0.977	30.00	1395	41.85	88.0%	
	315.1	62.30	0.978	40.00	1400	56.00	89.9%	
240	146.2	32.75	0.929	20.00	1380	27.60	84.3%	
	206.3	47.24	0.961	30.00	1376	41.28	87.4%	
	264.3	61.56	0.972	40.00	1371	54.84	89.1%	

产品尺寸图/ Product Size Diagram



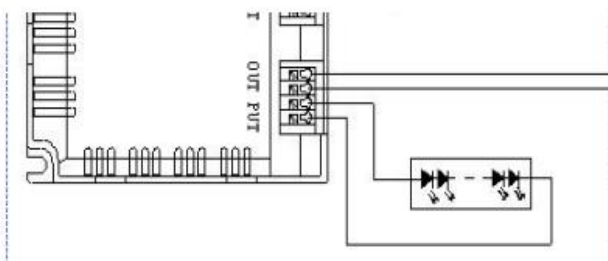
产品接线示意图/ Product Connection Diagram

产品接线示意图/ Product Connection Diagram



Page 2 of 4

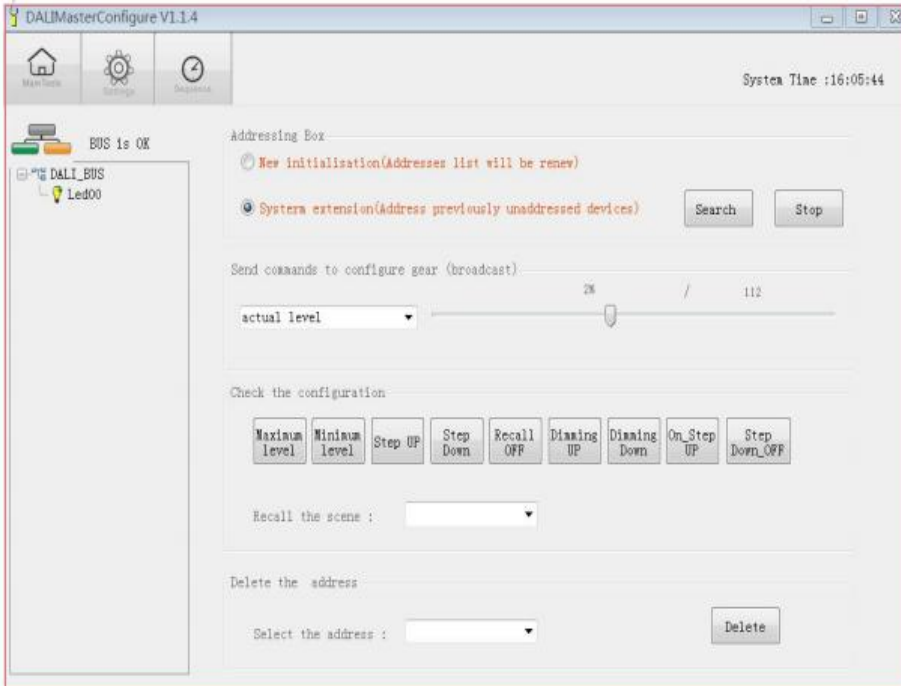
一个DALI调光器可以同时接多种模组



一个DALI调光器可以同时接多块模组，同时调光。

产品操作方法

接线完成后，在电脑上装此软件，运行后通过软件控制开、关、电流。以下为操作截图。



备注/Note:

1. 所有没提及到的参数都是在230V输入，额定负载和在周围温度为25°C的情况下测试的；
All parameters NOT specially mentioned are measured at 120VAC input, rated load and 25 of ambient temperature;
2. 本驱动电源是作为一个部件与最终的设备结合进行操作的。因为EMC的性能在电源完全安装后会受到影响，因此最终设备制造商在完成安装后必须重新获取EMC指示认定。
The LED driver is considered as a component that will be operated in combination with final equipment. Since EMC performance will be affected by the complete installation, the final equipment manufacturers must re-qualify EMC Directive on the complete installation again.
3. 可以直接与LEDs连接，但不适宜与额外的驱动电源使用；
Direct connecting to LEDs is suggested, but is not suitable for using additional drivers.
4. 为了满足在灯具安装中最后的Erp校准要求，本驱动电源只能在一个不是永久地连接在交流干线的开关后面使用。
To fulfill requirements of the latest ErP regulation for lighting fixtures, this LED power supply can only be used behind a switch without permanently connect to the mains.

广东领冠智能科技有限公司

Guangdong Linkuan Smart Tech Co.,Ltd

地址：广东省东莞市万江区大莲塘工业区3号
Address: NO.3 Building, Daliantang Industrial Park,
Wanjiang District, Dongguan, Guangdong, China
Tel:+86-769-23129651 Fax:+86-23129652