



LKAD029D-C



Class P SELV TYPE HL CE RoHS



Features

Output:	Constant Current
Range:	300mA-750mA @ 20-55Vdc / 600mA-1000mA@20-42V (fixed & preset by factory)
PFC design:	Built-in active PFC function
Efficiency:	Up to 87%
Protections:	Short circuit/ over load/ over temperature
Heat dissipation:	Cooling by free air convection
Waterproof Performance:	For dry, damp, wet locations
Dimming function:	0-10V dimming: 0-10V/1-10V/Potentiometer/10V PWM 4 in 1
Dimming Range:	0-100%
Application:	Suitable for LED lighting and moving sign applications
Warranty:	5 years warranty



Specification

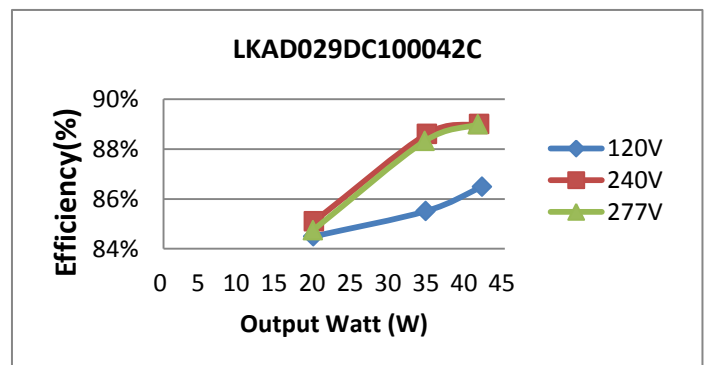
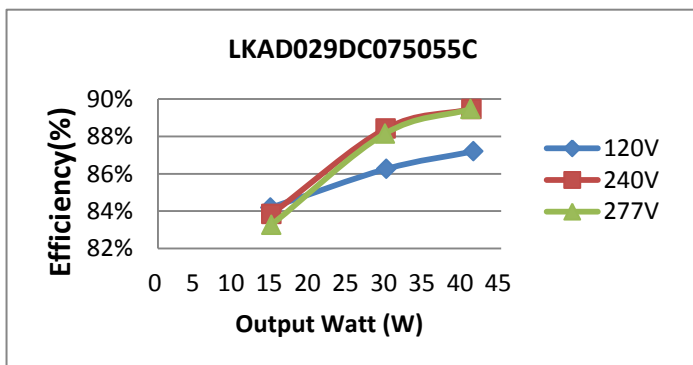
Model:		LKAD029DC075055C	LKAD029DC100042C
Certificate		CUL,CE,Rosh,	
Output	DC Voltage	20-55V	20-42V
	Voltage Tolerance	±0.5V	
	Voltage Regulation	±0.5%	
	Rated current	750mA	1000mA
	Rated power	41W	42W
	Load Regulation	±2%	±1%
Input	Voltage Range	120-277VAC	
	Frequency Range	50/60hz	
	Power Factor(Typ.) @full load	0.994@120VAC	0.995@120VAC
	THD(Typ.) @ full load	<15%@120VAC & 277VAC	
	Efficiency(Typ.) @ full load	≥87%@120VAC	≥86%@120VAC
	AC Current (Max.)	0.58A	
	Inrush Current (Typ.)	15A, 50%, 1.4ms @120VAC	65A, 50%, 1.4ms @277VAC
	Leakage current	<0.5mA	
Protection	Short Circuit	shut down o/p voltage, re-power on to recover after fault condition removed	
	Over Load	≤120% constant current limiting, auto-recovery after fault condition removed	
	Over temperature	100°C±10°C shut down o/p voltage, automatically recover after cooling	
Environment	Working TEMP.	-40~+60°C (see below derating curve)	
	Working Humidity	20 - 95%RH non-condensing	
	Storage TEM.,Humidity	-40 - +80°C,10 - 95% RH non-condensing	
	TEMP.coefficient	±0.03%/°C(0 - 50°C)	
	Vibration	10~500Hz, 5G 12min./1 cycle, period for 72min. each along X,Y,Z axes	
Safety & EMC	Safety standards	UL8750 , CAN/CSA-C22.2 No.250.13	
	Withstand voltage	I/P-O/P: 1.8KVAC I/P-FG: 1.8KVAC O/P-FG1.8KVAC	
	Isolation resistance	I/P-O/P: 100MΩ/ 500VDC/ 25°C/ 70% RH	
	EMC Emission	FCC 47 CFR Part 15 ,Subpart B	
Others	Net Weight		
	Dimension	110.5 * 40.5* 25.5mm(L*W*H)	
	Packing	Cartons	
Notes	<p>1. All parameters NOT specially mentioned are measured at 120VAC input, rated load and 25°C of ambient temperature.</p> <p>2. Tolerance: includes set up tolerance and load regulation.</p>		



Electrical Characteristics

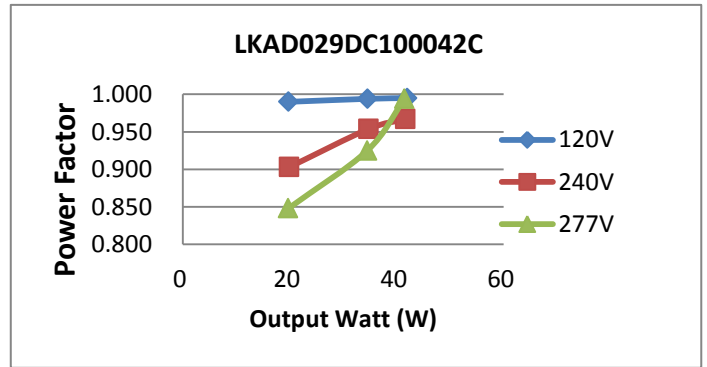
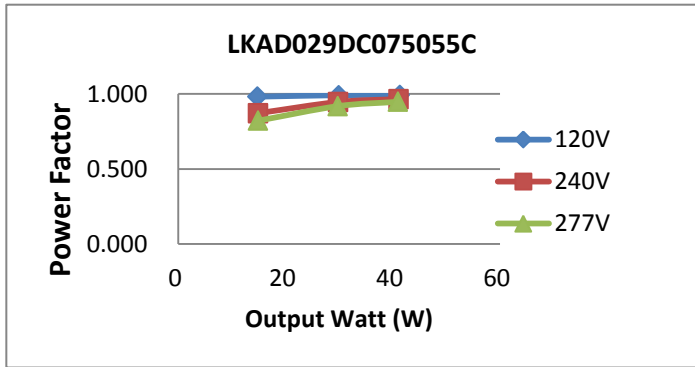
Model: LKAD029DC075055C							
Input voltage (Vac)	Input Current (mA)	Input Power (W)	Power Factor	Output Voltage (Vdc)	Output Current (MA)	Output Power (W)	Efficiency (%)
120V	392.80	47.43	0.994	55.00	752	41.36	87%
	287.30	34.73	0.992	40.00	749	29.96	86%
	146.90	17.51	0.982	20.00	737	14.74	84%
240V	197.70	45.92	0.966	55.00	747	41.09	89%
	148.20	33.75	0.947	40.00	746	29.84	88%
	86.20	17.77	0.872	20.00	745	14.90	84%
277V	174.40	45.80	0.948	55.00	745	40.98	89%
	132.50	33.76	0.919	40.00	744	29.76	88%
	78.32	17.87	0.822	20.00	744	14.88	83%

Model: LKAD029DC100042C							
Input voltage (Vac)	Input Current (mA)	Input Power (W)	Power Factor	Output Voltage (Vdc)	Output Current (MA)	Output Power (W)	Efficiency (%)
120V	409.10	48.56	0.995	42.00	1000	42.00	86%
	340.10	40.44	0.994	35.00	988	34.58	86%
	195.40	23.41	0.990	20.00	989	19.78	84%
240V	203.40	46.76	0.967	42.00	991	41.62	89%
	172.00	39.22	0.954	35.00	993	34.76	89%
	108.80	23.36	0.903	20.00	994	19.88	85%
277V	178.00	46.58	0.994	42.00	987	41.45	89%
	152.00	39.03	0.925	35.00	985	34.48	88%
	98.84	23.27	0.848	20.00	986	19.72	85%

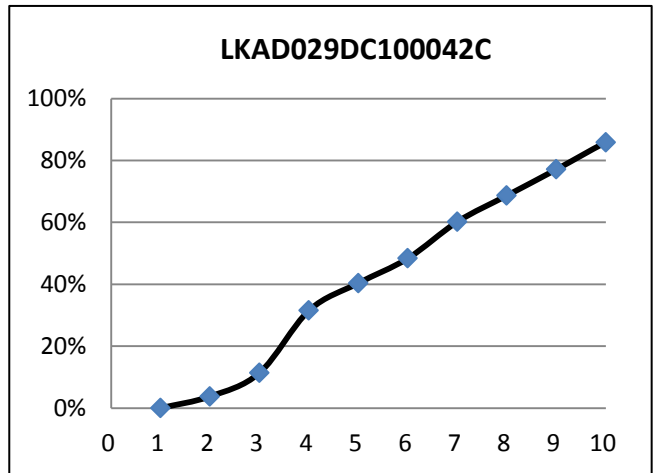
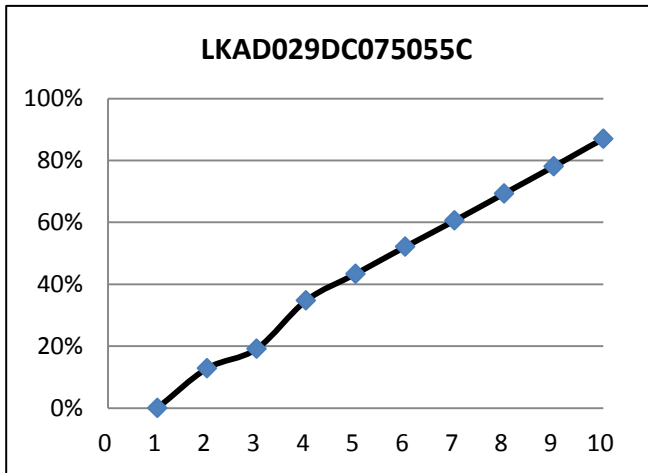


0-10V/1-10V Dimming LED driver 40W Max.

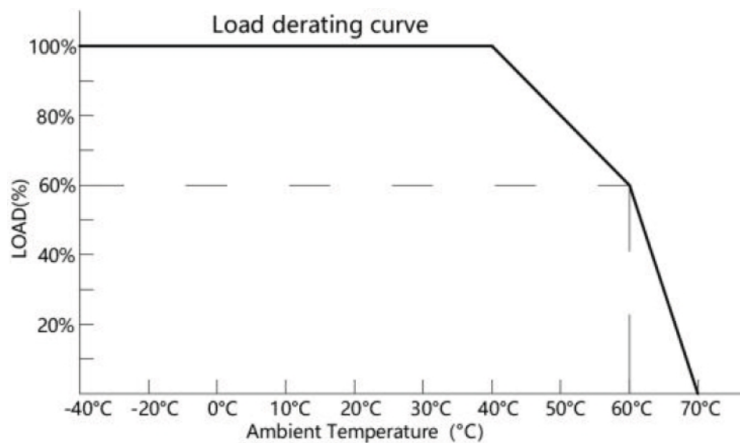
Power Factor Curve



0-10V Dimming Curve

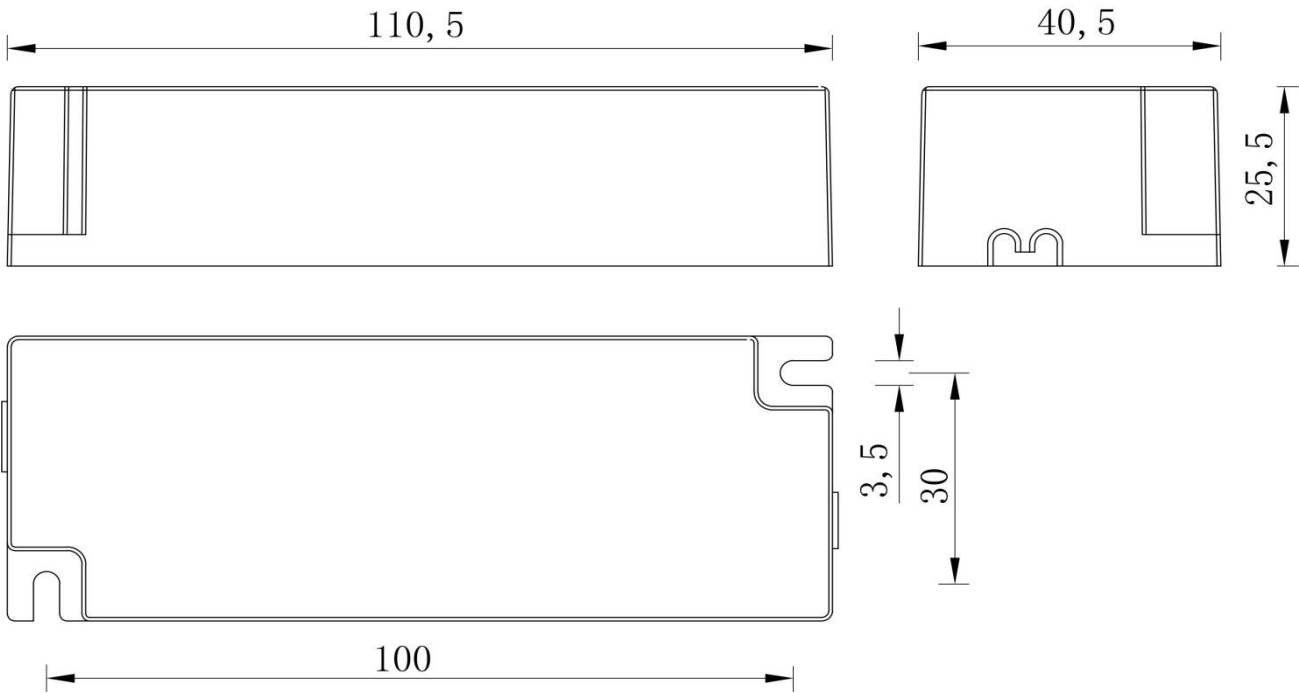


Derating Curve (output load vs TEMP.)

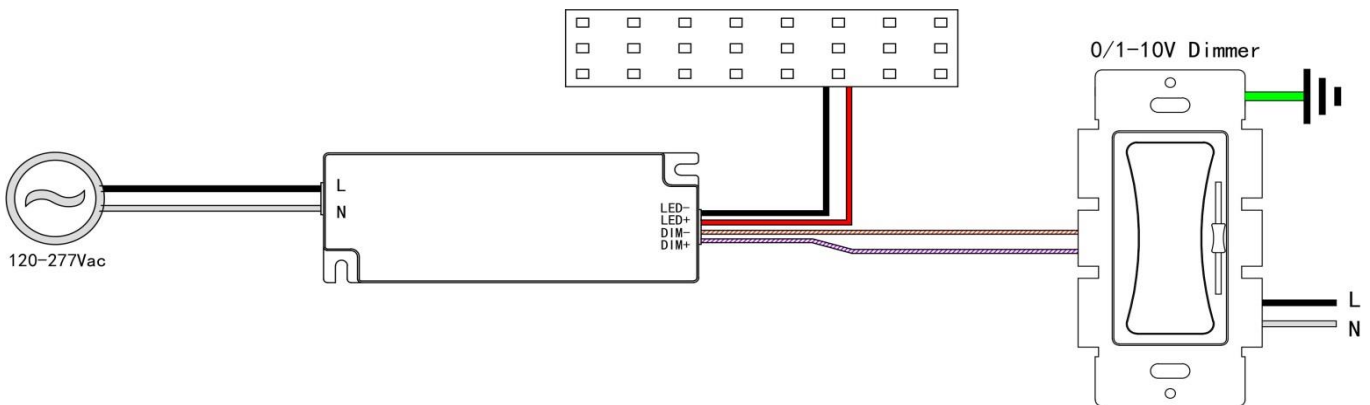




Installation Dimension



Wiring Diagram



1. Input cable 2*18AWG, Black cable to L, and White cable to N of Mains AC.
2. Output cable 2*18AWG, Red cable (+) to LED Positive side (+) , Black cable (-) to LED Negative side (-).
3. Dimming cable 2*22AWG, Purple cable DIM (+) to 0/1-10V dimmer signal(+), Pink cable DIM (-) to 0/1-10V dimmer signal (-).
4. Please make sure your connect these correctly otherwise your product will not function correctly and could be damaged



Dimming Operation

Working well with most EU and US brands of 0/1-10V dimmers, 10V PWM dimmers or dimming system as well as potentiometer dimming system.

Notices

1. This driver should be installed by qualified and professional person.
2. Please make sure the driver is installed with adequate ventilation around it to allow for heat dissipation.
3. Ensure that wiring is correct before test in order to avoid light and power supply damage.
4. If driver Cannot work normally, don't maintain privately.

If still have any questions, please contact us directly